

Postal Code 78736

Residential Statistics



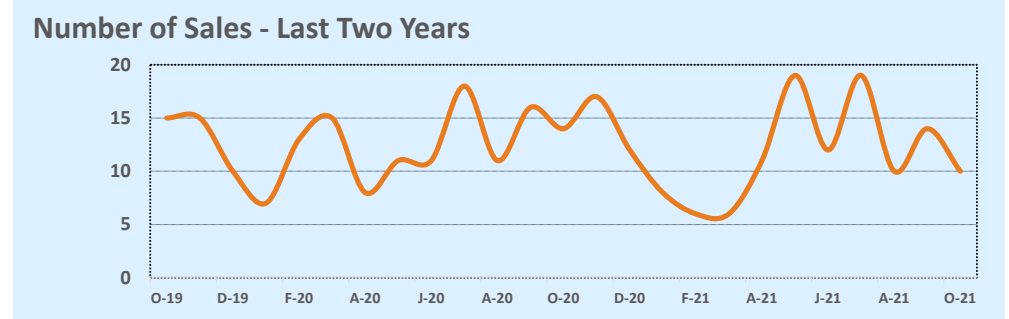
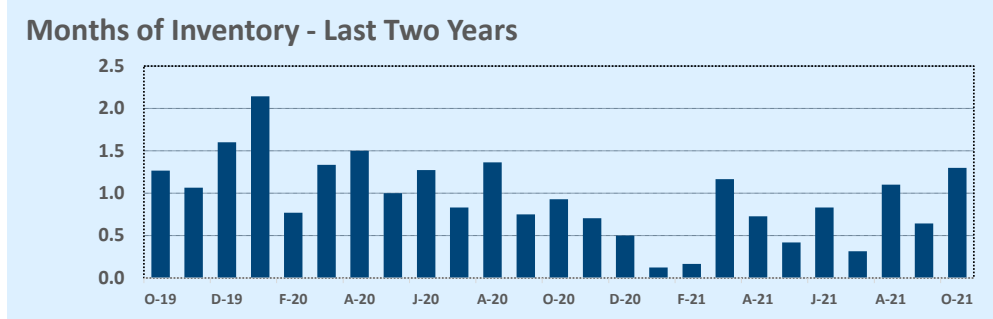
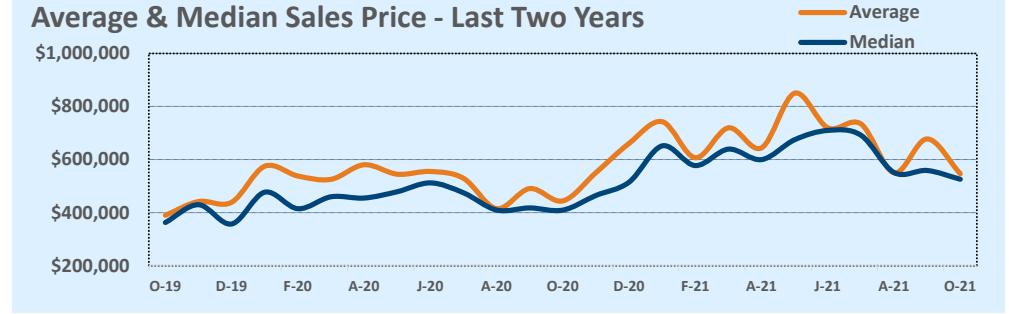
October 2021

Listings	This Month			Year-to-Date		
	Oct 2021	Oct 2020	Change	2021	2020	Change
Single Family Sales	9	13	-30.8%	106	118	-10.2%
Condo/TH Sales	1	1	--	9	6	+50.0%
Total Sales	10	14	-28.6%	115	124	-7.3%
New Homes Only	--	--	--	1	4	-75.0%
Resale Only	10	14	-28.6%	114	120	-5.0%
Sales Volume	\$5,469,401	\$6,222,500	-12.1%	\$80,207,794	\$63,836,830	+25.6%
New Listings	19	12	+58.3%	140	146	-4.1%
Pending	--	--	--	--	--	--
Withdrawn	--	--	--	5	4	+25.0%
Expired	--	--	--	5	4	+25.0%
Months of Inventory	1.3	0.9	+40.0%	N/A	N/A	--

Price Range	This Month			Year-to-Date		
	New	Sales	DOM	New	Sales	DOM
\$149,999 or under	--	--	--	--	--	--
\$150,000- \$199,999	--	--	--	--	1	11
\$200,000- \$249,999	--	--	--	4	4	5
\$250,000- \$299,999	2	1	7	5	3	7
\$300,000- \$349,999	--	--	--	--	--	--
\$350,000- \$399,999	--	--	--	2	--	--
\$400,000- \$449,999	1	3	27	14	10	13
\$450,000- \$499,999	2	--	--	17	8	7
\$500,000- \$549,999	4	2	25	17	15	13
\$550,000- \$599,999	3	--	--	22	11	11
\$600,000- \$699,999	2	2	56	15	16	15
\$700,000- \$799,999	1	2	5	14	22	9
\$800,000- \$899,999	1	--	--	5	6	41
\$900,000- \$999,999	1	--	--	4	3	55
\$1M - \$1.99M	1	--	--	13	15	22
\$2M - \$2.99M	1	--	--	6	1	23
\$3M+	--	--	--	2	--	--
Totals	19	10	26	140	115	15

Average	This Month			Year-to-Date		
	Oct 2021	Oct 2020	Change	2021	2020	Change
List Price	\$552,300	\$438,557	+25.9%	\$662,940	\$521,148	+27.2%
List Price/SqFt	\$275	\$223	+23.7%	\$297	\$227	+30.8%
Sold Price	\$546,940	\$444,464	+23.1%	\$697,459	\$514,813	+35.5%
Sold Price/SqFt	\$274	\$226	+21.3%	\$314	\$225	+39.5%
Sold Price / Orig LP	99.3%	99.5%	-0.2%	106.3%	99.2%	+7.2%
Days on Market	26	13	+99.2%	15	36	-57.5%

Median	This Month			Year-to-Date		
	Oct 2021	Oct 2020	Change	2021	2020	Change
List Price	\$517,000	\$399,500	+29.4%	\$580,000	\$450,000	+28.9%
List Price/SqFt	\$276	\$228	+20.9%	\$274	\$222	+23.3%
Sold Price	\$526,000	\$409,750	+28.4%	\$610,000	\$455,250	+34.0%
Sold Price/SqFt	\$269	\$236	+14.0%	\$297	\$219	+35.7%
Sold Price / Orig LP	100.0%	102.1%	-2.0%	105.0%	100.0%	+5.0%
Days on Market	25	4	+512.5%	6	8	-25.0%



Based on information from the Austin Board of REALTORS® (alternatively, from ACTRIS). Neither the Board nor ACTRIS guarantees or is in any way responsible for its accuracy. The Austin Board of REALTORS®, ACTRIS and their affiliates provide the MLS and all content therein "AS IS" and without any warranty, express or implied. Data maintained by the Board or ACTRIS may not reflect all real estate activity in the market.